



APPLICATION REPORT

Southerly Waste Water Treatment Plant

V-RAM SOLIDS

Application

The City of Columbus began their effort to obtain an efficient method of waste transfer with a test. The test included a hydraulically-driven reciprocating piston pump (HDRPP), specifically the V-Ram 16" Double Municipal Pump.

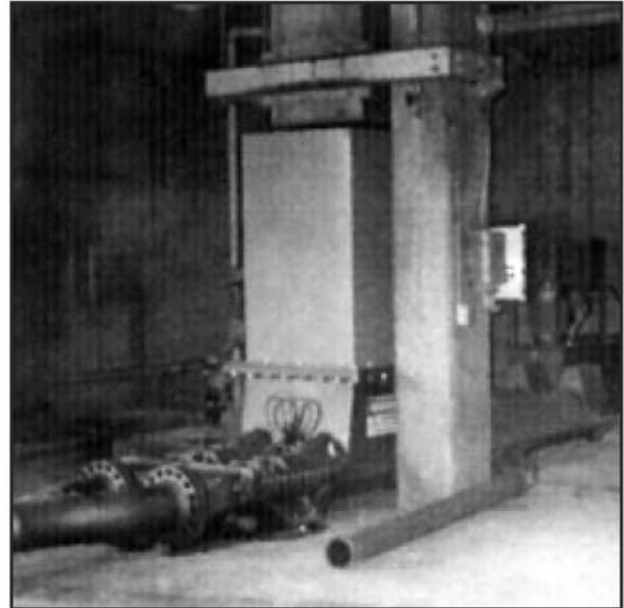
A local engineering firm had proposed that this type of pump be installed to feed dewatered sludge cake into the incinerators. The consulting engineers believed problems associated with the current feed method of screw or belt conveyors resulted in inconsistent sludge feed rates. The constant, uniform transfer typical of the discharge of HDRPP's would eliminate the problem. The flexibility of piping layout associated with pumping would also be beneficial.

The firm was impressed with V-Ram's "typically lower dis-

charge pressures, its simple, straightforward design and control arrangement, its low cost, and its robust construction.

The parties involved determined that an on-site demonstration of the pump should be performed to evaluate it within Southerly's facility. The test run allowed Southerly personnel to operate the pump for several weeks. At the conclusion of the test the operators' input was taken into account for final design and installation procedures.

Normal sludge mixtures at Southerly vary between 60% waste/40% raw blend up to 100% raw. Operators were encouraged to add "foreign" articles to the mix including: soda cans, nuts and bolts, hand tools, welding rod, lumber, gloves, rope, etc.



V-Ram Solids 16" Municipal Pump installed at Southerly Waste Water Treatment Plant.

Installation: City of Columbus Southerly Waste Water Treatment Plant

Purchase date:	July 6, 1993
Material specifications:	22-35%
Total dynamic head:	465 ft.
Pump capacity:	40,000 - 50,000 lbs/hr
Hydraulic pump capacity:	60 GPM each
Pump motors:	50 HP, 460 volt, 60 htz, 3 pH, 1800 rpm
Oil reservoir:	180 gallons
Oil cooler:	water cooled

Olson Manufacturing Company

d/b/a "Olson Mfg" and "V-RAM Pumps"
620 S. Broadway Ave, Albert Lea, MN 56007 USA

Phone: (888)373-3996 Fax: (507)373-5937

Email: sales@vram.com

www.vram.com