

THE ANSWER IS SIMPLE

V-RAM MUNICIPAL SLUDGE PUMPS

Hydraulic Unit and Control System coordinate pump flow management.

Hydraulic Unit

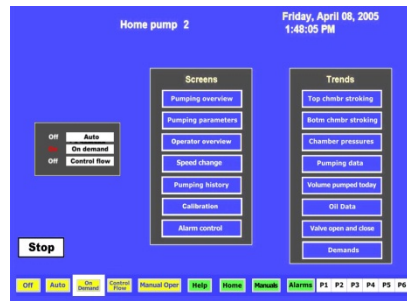
The hydraulic unit consists of a large oil reservoir, a multistage piston pump, pump and auger at controlled speed and efficiency. Pump flow management maximizes output and minimizes pumping module wear.



Controls

V-RAM controls consist of a PLC and PC operator interface which can be readily system and is easily configured. Pumping volume can be controlled and reported in several ways for EPA reporting. The control monitors pumping faults and informs the operator for corrective action.

V-RAM has manufactured hydraulically – driven, reciprocating pumps since 1978.



Olson Manufacturing Company
 d/b/a "Olson Mfg" and "V-RAM Pumps"
 620 S. Broadway Albert Lea, MN 56007 USA
 Phone: (888)373-3996 Fax: 507-373-5937
 Email: sales@vram.com Website: www.vram.com